

RIDERS GUIDE

2JUNE26



2026 Mountain Bike (MTB) Off-Road



Sunday 26th July 2026 - Sarimbun Scout Camp



Content Page

GENERAL INFORMATION.....	3
CATEGORIES.....	5
RACE FEES.....	6
SCHEDULE.....	7
VENUE.....	8
TECHNICAL REGULATIONS.....	13

1. GENERAL INFORMATION

The **OCBC Singapore National Championships (MTB)** bring together top riders for elite competition while boosting engagement in the cycling community. They also feature Cadet Races, giving young athletes a national platform to develop skills, encourage participation, and advance in the sport.

Event Formats

- **Cadet Races (300m race and 3km race)**

This fun and exciting race format is designed for young riders, encouraging participation, confidence, and basic racing skills such as balance, pacing, and awareness on the course.

All riders start together at the same time. The first rider to cross the finish line wins.

- **Cross-Country Eliminator (XCE)**

A short, high-intensity race format featuring heats of a maximum of four (4) riders.

- Riders compete head-to-head on a short technical course
- The top 2 riders from each heat advance to the next round
- The remaining riders are eliminated until the final determines the winner

- **Cross-Country Olympic (XCO)**

XCO begins with all riders starting simultaneously. This makes "holeshot" (the sprint for the first corner) critical, as passing on narrow technical trails can be difficult.

- Races are held on closed loops.
- Riders complete a set number of laps depending on their category and the course conditions.
- 80% or overlapping rule will be applied.

Details

- Event Date: Sunday 26th July 2026
- Time: 0630 - 1730 hrs
- Venue: Scouts Camp 70 Jalan Bahtera, Singapore 719921. <https://www.scout.sg/>



Organisers & Governing Bodies

- Organised by the Singapore Cycling Federation [SCF](#)
Email: admin@singaporecycling.org.sg Tel: 65-67846621.
- Sporting governing body: [Sport Singapore](#)
- International Federation: [Union Cycliste Internationale \(UCI\)](#)

Participation & key information

- Open to all Nationalities
- **Riders (13 years & above) must hold a valid 2026 UCI Licence**
- Classification: [SCF OCBC GC 'Off-Road' Policy](#) – as a 'Class 1'
- Registered in the [Calendar for UCI Categories](#)
- Event management by SCF Staff and Volunteers
- Sporting control / Refereeing, by SCF National Commissaires

SCF OCBC General Classification (GC)

- Open to all Nationalities.
- Includes both Individual and Team points.
- Applies to both Female and Male categories in all SCF Categories:

Youth (13-16 years)

Junior (17-18 years)

U23 (19-22 years)

Elite (23 years & above)

Master (35 years & above)

2. CATEGORIES (subject to change)

Age Calculation: A rider's racing age is calculated as: 2026 minus, Year of Birth



UCI Points

- Awarded only for events registered on the [official calendar of the UCI](#), limited to Singaporean riders in the following UCI categories for both gender.

XCE - ELITE: 17 years & above.

XCO - Junior: 17-18 years. U23: 19-22 years. Elite: 23 years & above

Awards

-  Official UCI categories: National Champion jersey (CN)
-  SCF Local categories: Domestic Champion jersey (DC)
- Medals will be awarded to the top three finishers in each applicable event.

Format

- Cadet Races: 300m circuit race / 3km Trail Riders, race
- Cross-Country Eliminator (XCE)
- Cross-Country Olympic (XCO)

SCF reserves the right to combine age groups after registration closes, depending on the number of participants in each category.

	XCE: Age / years	Jersey		XCE: Age / years	Jersey
1	Women Youth (13-16)	DC	4	Men Youth (13-16)	DC
2	<i>Women ELITE (17 years & above)</i>	<i>CN</i>	5	<i>Men ELITE (17 years & above)</i>	<i>CN</i>
3	Women Masters (35 years & above)	DC	6	Men Masters (35 years & above)	DC
	XCO: Age / years	Jersey		XCO: Age / years	Jersey
7	Women Youth (13-16)	DC	12	Men Youth (13-16)	DC
8	<i>Women Junior (17-18)</i>	<i>CN</i>	13	<i>Men Junior (17-18)</i>	<i>CN</i>
9	<i>Women U23 (19-22)</i>	<i>CN</i>	14	<i>Men U23 (19-22)</i>	<i>CN</i>
10	<i>Women Elite (23 & above)</i>	<i>CN</i>	15	<i>Men Elite (23 & above)</i>	<i>CN</i>
11	Women Masters (35 years & above)	DC	16	Men Masters (35 years & above)	DC
	Cadet Race: Age / years (300 m)			Cadet Race: Age / years (3 km)	
17	Cadet D: 4-6		21	Trail Rider B: 5-8	
18	Cadet C: 7-8		22	Trail Rider A: 9-12	
19	Cadet B: 9-10				
20	Cadet A: 11-12				

3. RACE FEES

RIDERS: 13 years & above, must hold a valid **Union Cycliste Internationale (UCI)** racing license in order to compete, which includes insurance coverage for:

- **Personal Accident**
- **Personal Liability**

If you do not hold a valid license, please register for the 2026 (UCI) Racing License here: [UCI License Application](#)

13 to 18 years: \$60
19 years & above: \$100

Age/Category	SCF Affiliate (Sing \$)	Non – Affiliate (Sing \$)
19 years & above (1 format)	\$70	\$90
19 years & above (2 formats)	\$130	\$160
4 to 12 years (300m race)	\$30	
5 to 12 years (3km race)	\$30	
13 to 18 years (XCE)	\$50	
13 to 18 years (XCO)	\$50	

Requests for refunds or withdrawals must be submitted in writing via email to Singapore Cycling Federation (SCF) at admin@singaporecycling.org.sg no later than **19 July 2026**, before the Start List is released. Any requests received after this date will not be entertained.

Any request to change racing categories must also be submitted in writing via email to SCF before the final registration closing date. Requests received after the registration deadline will not be entertained.

Please note: Once the registration period has closed and the Start Lists have been published, no further amendments to rider names or club information will be accepted.

Riders are responsible for ensuring that all registration details are accurate prior to submission.

If you are unsure about any part of your registration, please contact SCF promptly for clarification.

Please also note that all decisions made by the race organiser are final.

The Singapore Cycling Federation (SCF) will take all reasonable measures to ensure the safe and proper conduct of the event. However, should the event need to be cancelled due to unforeseen circumstances (including, but not limited to, inclement weather), no refunds will be issued.


4. SCHEDULE – Timeline subject to change/timings & laps/combine category

TIME LINE	
Registration CLOSE	19 July 2026
Start List & Updated Riders Guide with the Latest Schdule	22 July 2026
Race Kit Collection	26 July 2026
Event Day	26 July 2026

EVENT DAY: Sunday 26th July 2026		Categories in Waves, Groups, Laps (to be updated)
0630	Secretariat Open: Race Kit Collection – Transponder Pick up	
0715-0800	XCE: Official Practice	500 m course
0810-0830	Seeding (Time Trial) 30 sec Interval	
0840-0900	Qualifiers: ¼ - ½	
0910-0930	FINALS (followed by Podium Ceremony)	
	Break	
1000-1030	Cadets: Official Practice	300 m course
1045	Cadet D, race	
1100	Cadet C, race	
1115	Cadet B, race	
1130	Cadet A, race (followed by Podium Ceremony)	
	Break	
1230-1300	XCC: Official Practice (Cadets: 5-12 years - Trail riders only)	3 km course
1305-1330	XCC: Cadets: Trail Rider A & B race (followed by Podium Ceremony)	1 lap
1340-1440	XCO: Official Practice (Youth & above)	3 km course
1445-1615	XCO: 1st Wave (followed by Podium Ceremony)	Categories & Laps to be confirmed
1620-1730	XCO: 2nd Wave (followed by Podium Ceremony)	Categories & Laps to be confirmed

5. **VENUE** (to be updated) Race Secretariat 



Race Secretariat 



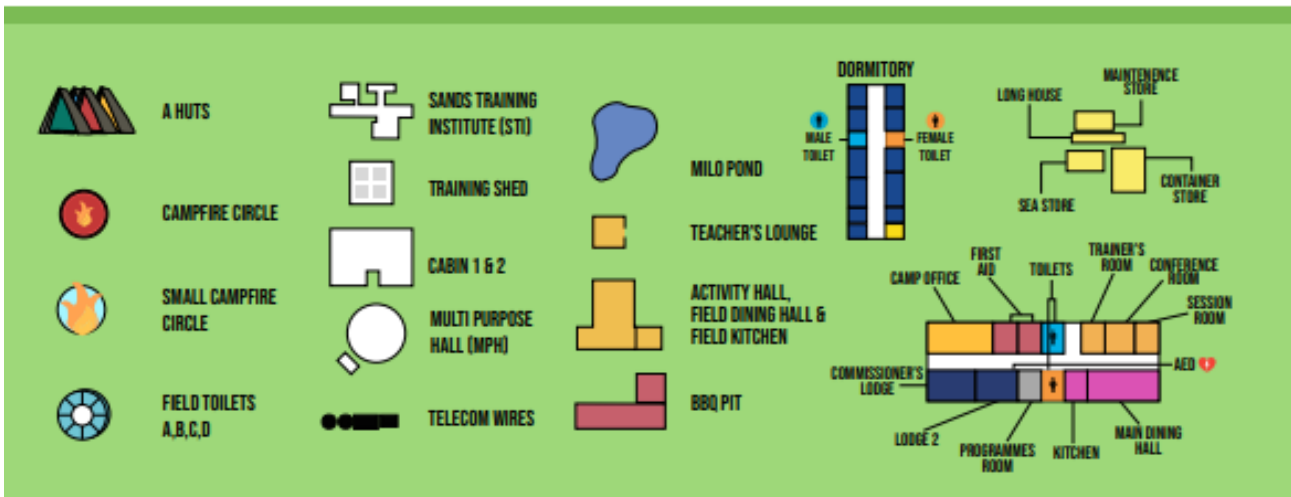
SARIMBUN SCOUT CAMP

70 JALAN BAHERA,
SINGAPORE 719921

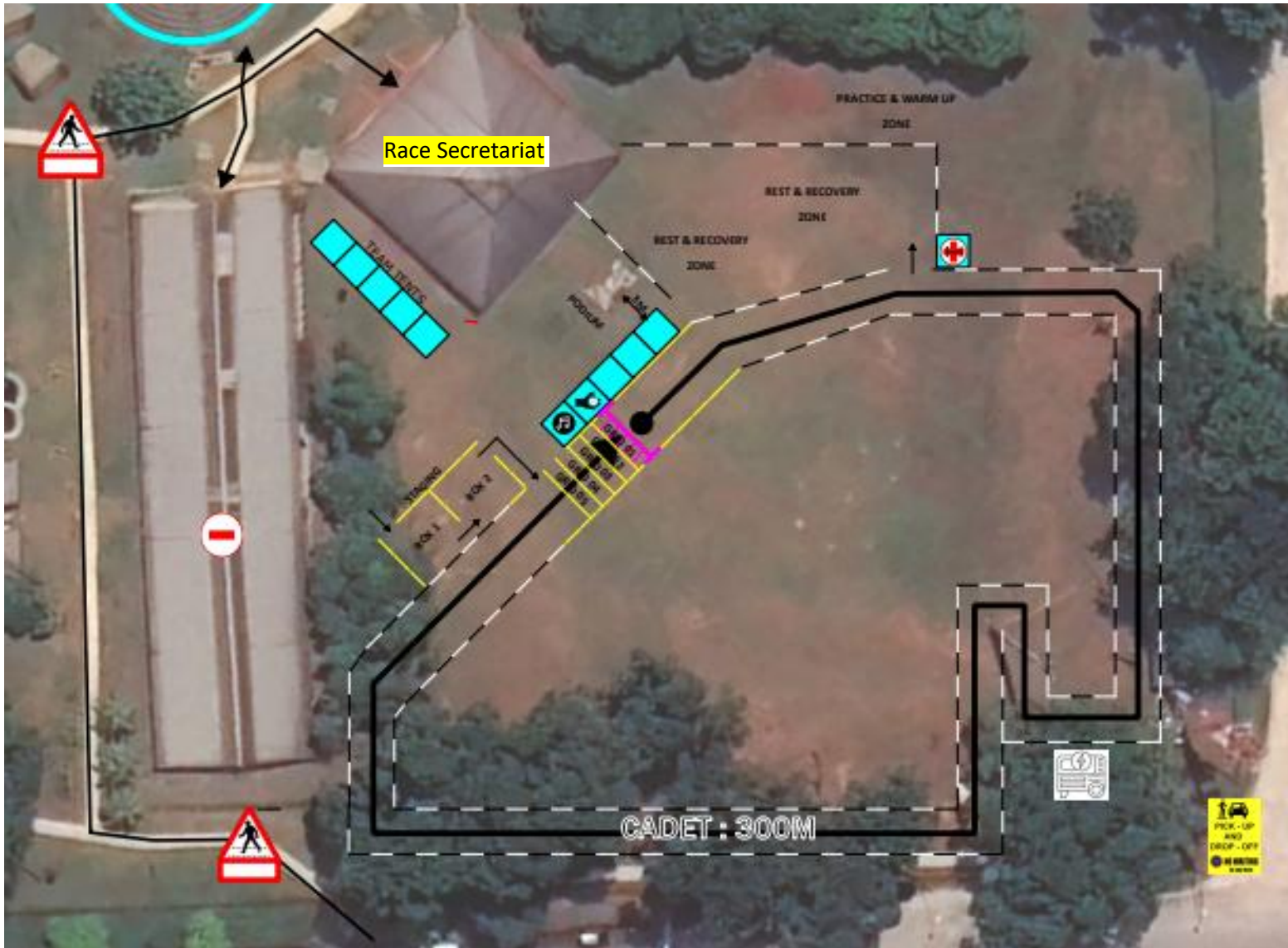


ACTIVITIES

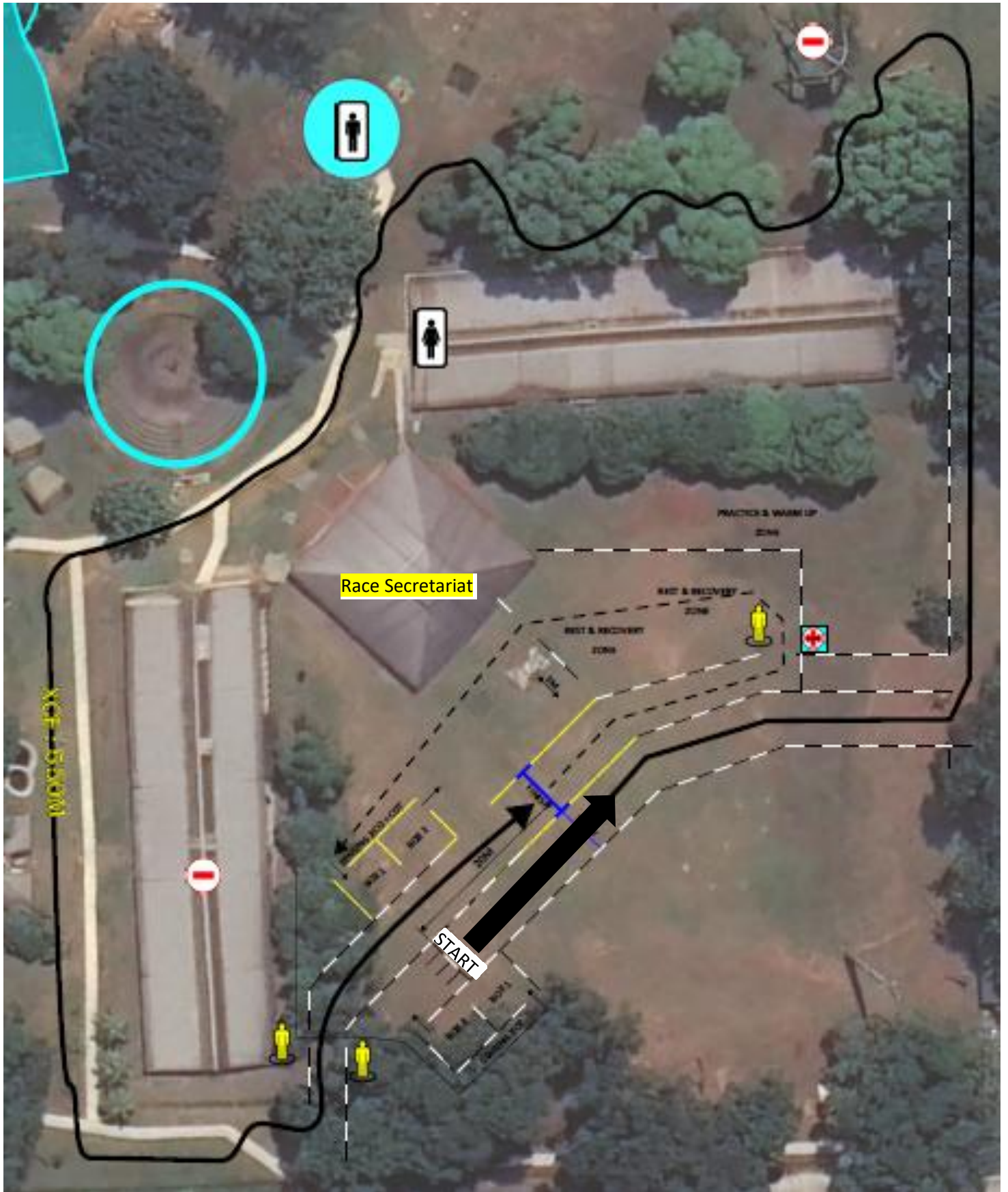
- 1 WHALE WATCH, WILD WOOLZY, NITRO CROSSING, GIANT FINGER
- 2 MINI FINGER, ISLANDS, WEB PHOBIA
- 3 SPIDERWEB, TYRE TUNNEL, TYRE SWING
- 4 RAFT BUILDING, BRIDGE BUILDING
- 5 MINEFIELD, REBIRTH, ENTRAPMENT, SWINGING LOGS, LOW WALL, TRAFFIC JAM
- 6 ARCHERY RANGE



Back of House (BOH) and Cadets Course (300m): **subjected to change**



XCE course: Distance Per lap - 500m



XCO & Trail Riders, course: Distance Per lap - 3 km



6. TECHNICAL, RULES & SPECIFIC REGULATIONS (subject to change & updates)

- [SCF Class 1](#) (GC points awarded)
- UCI Status: National Championship (CN) for UCI categories in XCE and XCO
- Authority and Race Operations: Race Director and SCF Staff
- Sporting Control (Refereeing) by the President of the Commissaires Panel (PCP) and the Panel
- ⚠ ALL decisions are FINAL - no appeals or protests

GENERAL rules

Mandatory

- Follow all instructions from officials & marshals
- Ride only in race direction (no shortcuts)
- Riders are NOT allowed to train/practice on the course, except on Sunday 26 July 2026
- Wear full gear at all times:
 - Helmet
 - Jersey (no sleeveless)
 - Shorts, socks (no ankle socks), shoes
- Display race number at all times (including official practice)
- Only registered riders allowed on the course

🚫 STRICT PROHIBITIONS

- ✗ Dangerous riding
- ✗ Littering
- ✗ Public urination (offence)
- ✗ Communication devices (earpieces, radios, iPods)
- ✗ Body-mounted cameras
- ✗ Bike swapping
- ✗ Throwing bottles/gels outside FTZ

RESPONSIBILITIES

- Proof of age required
- Riders must:
 - Follow all rules
 - Be self-sufficient (phone + ID)

⚠️ DISCIPLINE SYSTEM

- 1st offence → warning
- 2nd offence → **Disqualification (DSQ)**
- Misconduct by parents/team manager/riders → rider/team DSQ

🚩 RACE OPERATIONS

- Report 10 or 15 mins before 'Start'
- Only race in the correct Format/Start list/category/time frame/group/wave
- Lapped or 80% cutoff/time limits may be applied for Mass Start events

🚲 EQUIPMENT RULES

Rules focus on safety, fairness.

- Bikes must be in safe working condition with functional front and rear brakes and standard handlebars (no drop bars).
- Only human-powered bikes are allowed.
- Common setups include hardtail or full-suspension bikes.
- No frame/fork modifications
- Front: Number plate (bike handlebar number) / Rear: Body Number
 - Must be clearly visible
 - Cannot be altered, modified, cut, or add personal stickers
- Bike checks' may be conducted by race officials



CAMERA RULES

- ✗ Helmet/body <chest strap> cameras NOT allowed
- ✓ Only allowed:
 - Handlebar mount
- Must be securely bolted (no cable ties)

HELMET RULES

- Must meet safety standards
- Must NOT be:
 - Modified
 - Damaged or previously crashed
- Rider is responsible for compliance

UCI Points awarded to Singapore Riders for XCO

<i>Rank</i>	<i>ELITE</i>	<i>U23</i>	<i>Junior</i>
1	100	50	40
2	90	35	30
3	70	25	20
4	60	15	10
5	50	5	5
6	40		
7	30		
8	20		
9	10		
10	5		

SCF POINTS (CLASS 1)

Rank	Points
1	40
2	32
3	27
4	23
5	19
6	16
7	13
8	11
9	9
10	7

PODIUM RULES

- Winners must attend
- report when the announcements are made
- Wear as per racing attire (no helmet)
- **✗** No slippers / cap / sun glasses

TRANSPONDER

- Must be returned immediately after race
- Late return = penalty

Your Transponder must be correctly attached to your bike in order for your time to be recorded



- Place transponder on bottom of **FRONT RIGHT FORK** facing to the side.
- Thread the 5mm cable tie through the transponder and around the fork.
- Pull cable tie as tight as possible to ensure transponder remains flush to fork.

- Give transponder a tug – it should not be able to move.
- Transponder must be secure facing to the side.
- As shown right – transponder must not be able to swivel to the front or rear of fork.
- Cut off loose end of cable tie.
- To remove transponder cut cable tie.



**Transponder
Correctly attached**

- ✓ Transponder secure
- ✓ Right front fork
- ✓ Outside of fork
- ✓ Bottom of fork
- ✓ Cable tie trimmed

 **Cadets Race – Mass Start**

✓ **Participation & Timing**

- Only registered riders allowed on the course / field of play (FOP).
- Must display number identification at all times (on handlebars).
- Practice only during official sessions.
- Riders must report at their assigned time/category.

 **Parent/Guardian Responsibilities**

- Register rider, sign waiver, and provide proof of age.
- Responsible for rider's safety, equipment, health, clothing, and hydration.
- Cannot:
 - Enter the course during competition
 - Use radio/walkie talkie to communicate with riders during the race

 **Safety & Apparel**

- Mandatory: Helmet (MTB/BMX) open face or full face.
- Mandatory: Gloves, knee & elbow guards, covered shoes, with socks (300m race)
- Strongly advised: : Gloves, knee & elbow guards, covered shoes, with socks (3km race)
- No sleeveless shirts allowed.

 **Equipment Rules**

- Wheel size: no restriction.
- Brakes:
 - minimum 1 rear brake (300m race)
 - front & rear brakes (Traid Riders: 3km race)
- Bikes must be:
 - Safe, well-maintained, and properly fitted
 - Free of dangerous features
 - Unmodified (no frame/fork changes)
- Remove all stands and baskets.
- Ensure:
 - Tight bolts
 - Safe grips (no sharp edges)
 - Handlebars/seat within insertion limits
 - Equipment checks may be conducted by officials.

Cadets: Race Procedure

- Riders gather in the staging area with compliant bikes/equipment.
- Move to the start line when instructed.
- Commissaires give final instructions and conduct a countdown.
- Race starts with a whistle / or air horn

🚩 Race Format & Winning

- Race is run over a set number of laps (300m race)
- 1 Lap race for the (Trail riders, 3km race)
- All riders must complete all laps.
- Winner = first rider to cross the finish line after completing laps.

Staging: Riders assemble in the staging area before the race.

- Bikes and equipment must comply with safety requirements.
- Riders proceed to the start line when instructed.

Start Line Procedure: Final instructions are given by the commissaires.

Race Start: A countdown is conducted by the commissaires. The race begins with the **blow of a whistle**.

Race Format

- The race will be conducted over a **set number of laps** (to be determined by SCF or the Commissaires, based on course and conditions).
- All riders must complete the full number of laps.

Finish & Winner

- The winner is the **first rider to cross the finish line after completing the assigned number of laps**.
-

 XCE

Phase 1: Seeding Time Trial

- Riders complete an **individual time trial** on the course.
- Riders start one at a time at fixed intervals.
- Times are recorded to determine **seeding/rankings**.
- Results are used to assign positions for the elimination heats.

Phase 2: Qualifiers (Elimination Heats) Depending on the category head count/or combined categories

- Riders compete in heats (maximum of 4 riders per heat).
- Heats progress through:
 - Quarterfinals (1/4 Finals)
 - Semifinals (1/2 Finals)
- The top riders from each heat (Top 2) advance to the next round.
- Remaining riders are eliminated.

Phase 3: Finals

- May include a 'small final (rank 5-8)'
 - Top riders compete for podium positions.
 - **The overall winner is the first rider to cross the finish line.**
-

 XCO

1. Staging

- Reporting: Riders must be in the staging area at least 10 minutes before the start.
- Riders will be called up to the Grid & Start Line

2. Start Procedure

- Riders must start in their correct wave, group, category
- Grid: Rows of 6 riders
- Countdown: Warnings issued at **2 min, 1 min, 30 sec, 15 sec** (race can start anytime after this command)
- Signal: A whistle blast starts the race

3. Race Format

- Lap Control: Total laps will be pre-determined on the Final version of the Riders Guide, or set by the PCP on event Day.

4. During the Race

- Support: Feeding and mechanical repairs are restricted to designated 'Feed/Tech zones' (FTZ).
- Max 2 team members per rider
- No running alongside riders
- 80% Rule: Riders slower than 80% of the leader's first lap time are pulled to maintain race flow.
- *Example:* If the lead lap is 10 min, the 80% threshold for removal is 8 min behind.

5. Final Laps & Finish

- Bell Lap: Bell will be Rung for the leader to signify one (1) lap to GO.
- Lapped Riders: Once the leader finishes, all riders complete their current lap and finish; they are ranked by laps completed and arrival order.

6. Classification Table

Status	Ranking Logic
Finisher	Order of crossing the line after the leader.
Lapped (-1, -2, etc.)	Ranked by laps completed, then by finish order.
80% Rule	Ranked based on the order they were pulled from the course.
DNF / DSQ (no rank)	Did Not Finish-Rider abandons race / DSQ: Disqualified

Nearest Hospital : Ng Teng Fong General Hospital (NTFGH): [Located in Jurong East](#)